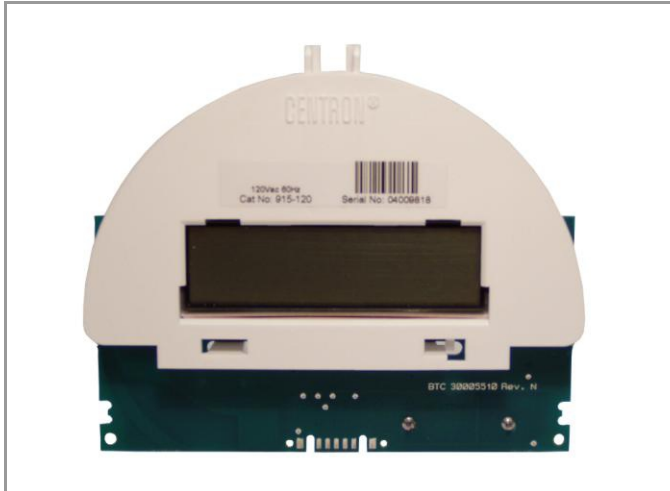


# 900 Series Transponder-Centron



## Features and Benefits

- ⇒ Monitors Electrical Signals from the CENTRON Metrology Board
- ⇒ Easily Configurable
- ⇒ Programmable Display Options
- ⇒ Detent and Non-Detent Programming Options
- ⇒ No Loss of Partial KWh Consumption or Configuration Data During Power Outages
- ⇒ LCD Segment Check
- ⇒ Designed to Work in an Open Systems Environment
- ⇒ Competitively Priced

**Application** The BluTower Transponder for the CENTRON meter implements the 900 Series Transponder functionality into the CENTRON solid state electricity meter. It is a personality module with the functions of meter register, display and RF transmitter. The Transponder is supplied fitted with the LCD and meter face.

**Operation** Using BluTower's open systems approach to AMR, Centron can be quickly and easily integrated into your existing infrastructure. Use of standard interfaces and protocols enables Centron to work with HandTrackIT<sup>®</sup> and FastTrackIT<sup>®</sup> receivers and many types of billing software systems. Your investment in existing systems is protected.

**Installation** Configuration and installation is simple and takes only minutes. Utilities can retrofit existing meters or buy meters with the personality module already installed. There are a number of configurable parameters available to the utility including display format and detent / non-detent option for detection of forward or reverse power flow.



## Meter Compatibility & Part Numbers

<b>Form</b>	1S	2S	2S	3S	3S	4S	12S
<b>Volts</b>	120V	240V	240V	120V	240V	240V	120V
<b>Class</b>	100	200	320	20	20	20	200
<b>Part No</b>	915-120	915-122	915-122	915-120	915-122	915-122	915-120

## OPERATIONAL AND PHYSICAL CHARACTERISTICS

Wireless Specifications	Operates in the 902 MHz to 928 MHz license exempt ISM band
Operating Temperature	-40° F to +185° F (-40° C to +85° C)
Data Format	Data is sent in fixed length, error checked, encoded data packets
Configuration Options	Utility code, ID number, display format, meter reading, transmission interval, detent/non detent
Operating Voltage	240VAC $\pm$ 20% (120VAC optional)
Power Consumption	0.5W nominal and 7VA (240VAC, 60Hz)
Tamper Detection	Error code in message indicates if reverse counts reported
Weight	1.7 ounces (including LCD)
Dimensions	H 3.5" x W 4.25" x D 1.2" (including LCD)

### Regulatory & Standards

- FCC Part 15 (Class B device): Radiated and conducted emissions
- ANSI C12.1 - 2001 (Tests applicable to AMR device)
- ANSI 12.20 (Class 0.5 - 1998): American National Standards for Electricity Meters
- ANSI C37.90.1 (1994): Standard Surge Withstand Capability (SWC) Tests
- IEC 61000-4-2 (1995): Electrostatic Discharge Immunity Test
- IEC 61000-4-4 (1995): Electrical Fast Transient Burst Immunity Test
- IEC 60068-2-6 (1995-03): Basic Environmental Testing Procedure: Mechanical Vibration
- IEC 60068-2-27 (1997-06): Basic Environmental Testing Procedure: Mechanical Shock
- IC RSS210: Industry Canada Specification for Approval of Low Power, License Exempt Radio Communication Device\*
- IC LMB-EG-07: Industry Canada Specification for Type Approval of Electric Meter\*

\*Qualification pending - contact your BluTower representative for status.

### ConFigIT<sup>®</sup> Electric for Centron

This device enables a number of parameters such as utility code, MIU ID, meter reading, display format, transmit interval, LCD segment check and meter read interval to be programmed into the Transponder before it is connected to a meter. To operate, connect the ConFigIT<sup>®</sup> device to a hand-held or personal computer via the serial port and insert the molded connector into the Tranponder.



PN: 360-200-10

©2009 BluTower, Inc. All rights reserved. Names, brand names and product names are the property of their respective holder(s). BluTower, Inc. reserves the right to change specifications, packaging, or other product information without notice. This publication could include technical inaccuracies or typographical errors. CENTRON is a registered trademark of Itron.

**BluTower, Inc.**  
2855 South Pine Ave.  
Ocala, FL 34471  
Tel: 352-624-8695  
Fax: 352-624-8696

Email: [infoweb@blutower.com](mailto:infoweb@blutower.com)  
Web: [www.blutower.com](http://www.blutower.com)



DS900Centron 012814